

Zoning Map

Village of Baldwin

Lake County, Michigan

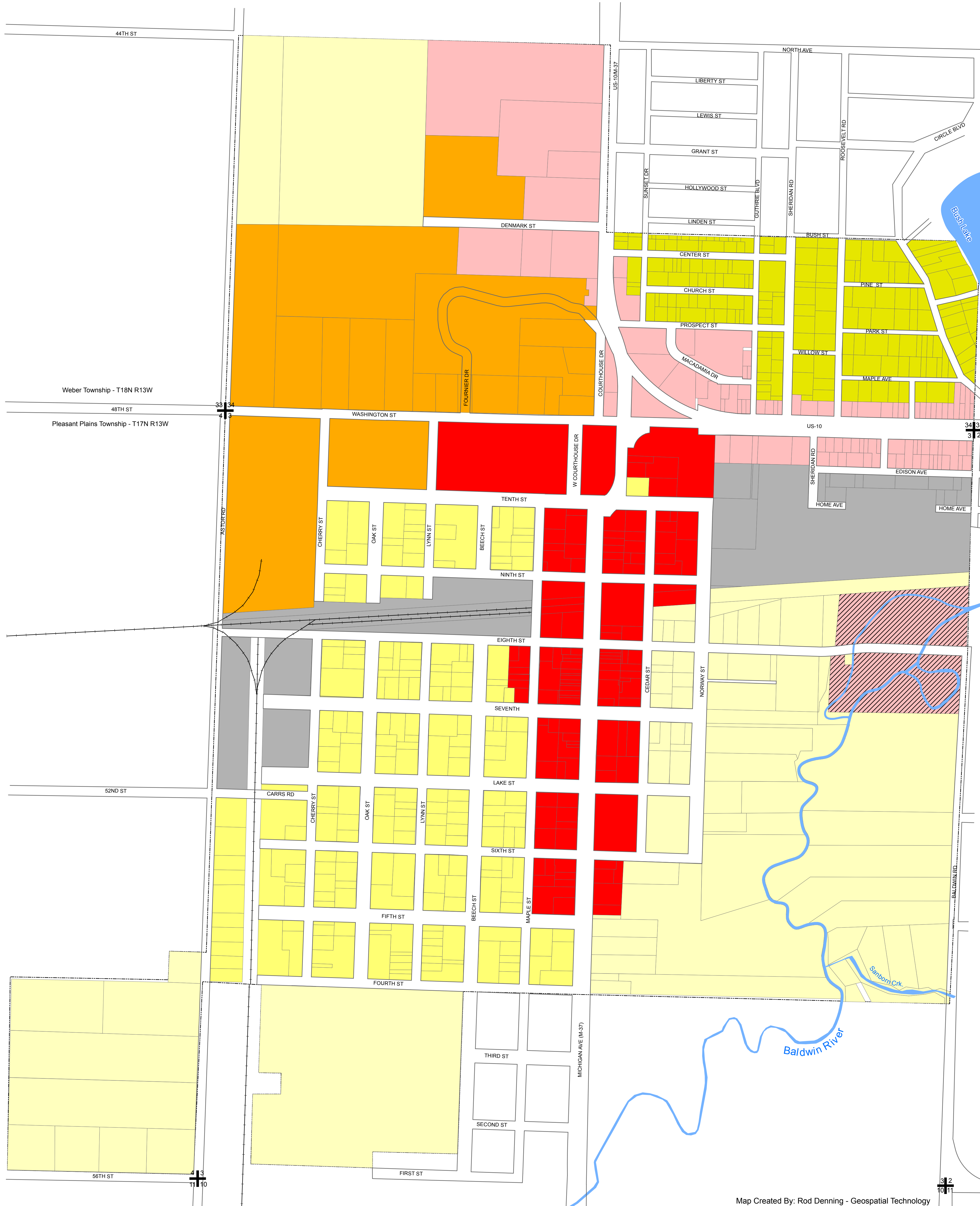
Effective March, 2014

CERTIFICATION

IT IS HEREBY CERTIFIED THAT THIS IS THE TRUE AND ACCURATE ZONING MAP FOR THE VILLAGE OF BALDWIN

President _____ Date _____

Clerk _____ Date _____



Map Created By: Rod Denning - Geospatial Technology Services, LLC - March 2014

Zoning Districts

- R-1 Low Density Single Family Residential
- R-2 Medium Density Single Family Residential
- R-3 High Density Single Family Residential
- R-4 Multi-family Residential

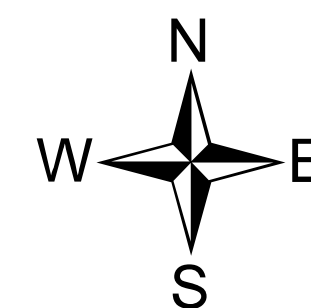
Legend

- C-1 Central Business District
- C-2 Highway Commercial
- I-1 Industrial
- PUD Parcels

- Road ROW
- Railroad
- Village Limit
- Water



1:4,000



Data Sources:
Base and Parcel data from 2007/2008 Master Plan update.
Zoning districts updated by Robert Toland Consulting, March 2014.